



**RADIUS**  
GOLD INC.

Suite 650 - 200 Burrard Street,  
Vancouver, BC, Canada V6C 3L6  
[www.radiusgold.com](http://www.radiusgold.com)

T: 604-801-5432  
F: 604-662-8829  
TF: 1-888-627-9378

RDU:TSX.V

# news release

March 22, 2022

## **Radius Gold drilling update: new intersection of 17.8m @ 144 g/t silver and 0.92 g/t gold at El Cuervo Target, Amalia Project, Mexico**

Vancouver, British Columbia – Radius Gold Inc. (TSXV: RDU) is pleased to report ongoing drill results from the El Cuervo target at the Amalia Project, Mexico.

Highlights from drill holes 48 and 49 include:

**Hole AMDD21-49: 17.8m @ 144 g/t Ag & 0.92 g/t Au**

**Hole AMDD21-48: 37.8m @ 54 g/t Ag & 0.34 g/t Au  
Including 1.6m @ 139 g/t Ag & 4.02 g/t Au**

Drill results received to date, as well as current and planned drilling, are presented in the plan sections and Table 1 below.

### **Discussion of Results**

Amalia is a large system with multiple vein structures (Amalia, California & El Cuervo) over 10km of combined strike with multiple targets on each structure. Compelling wide and high-grade mineralization has been intersected on the 3 principal drill targets tested to date.

At El Cuervo target 9 diamond drill holes have been completed (AMDD21-46 to 54) for a total 3468m. Assay results have been received for the first 4 drillholes (46 to 49).

The latest drill results are located on a section approximately 100m SE of last month's intersection in AMDD21-47 of 96m @ 167 g/t Ag & 0.54 g/t Au (figure 2) and confirm and expand a significant mineralized system at the EL Cuervo target. Drilling is ongoing to define the size potential.

Figure 1. Geology and targets overview - Amalia Project

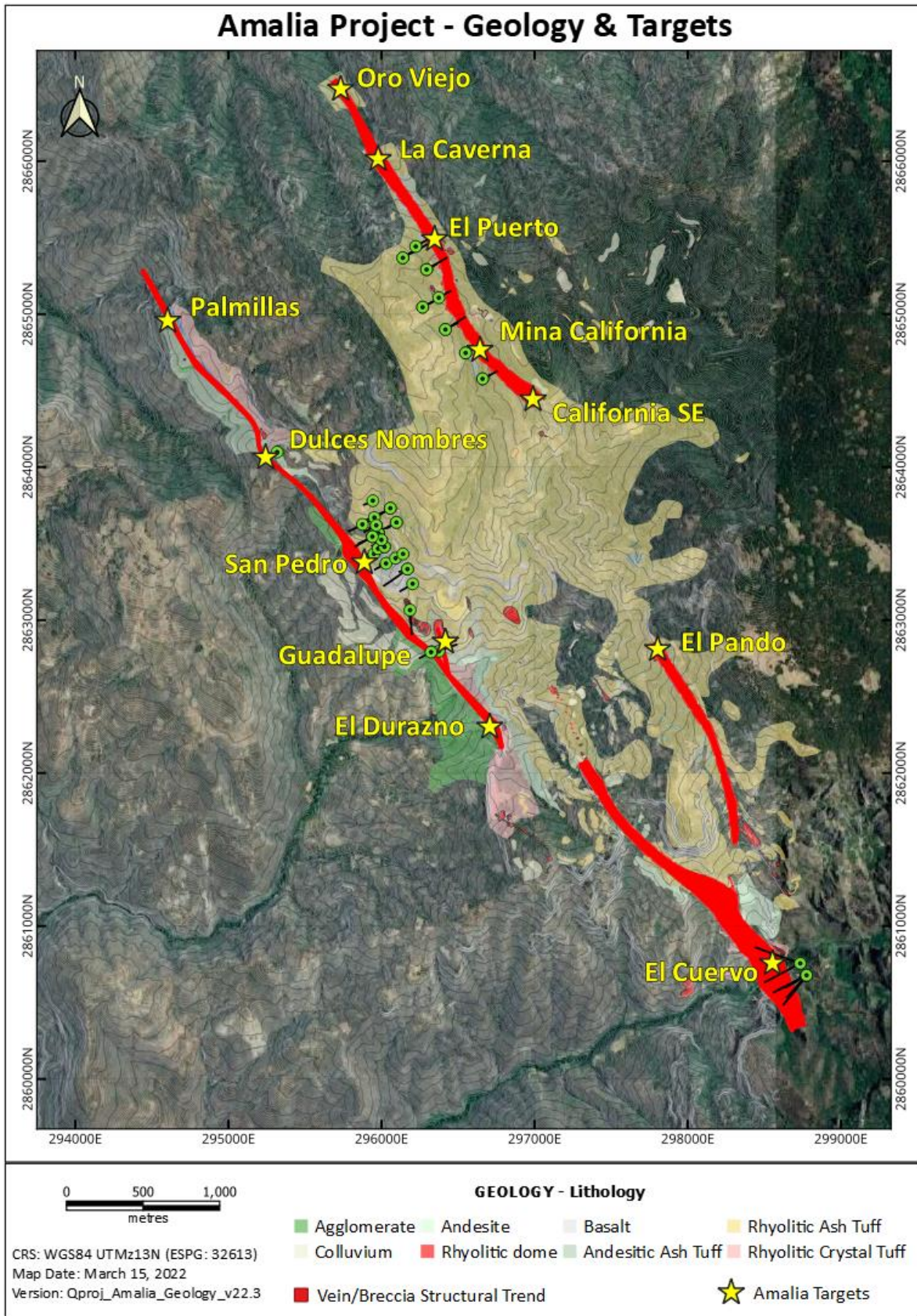




Figure 2. El Cuervo target – plan section & geochemistry

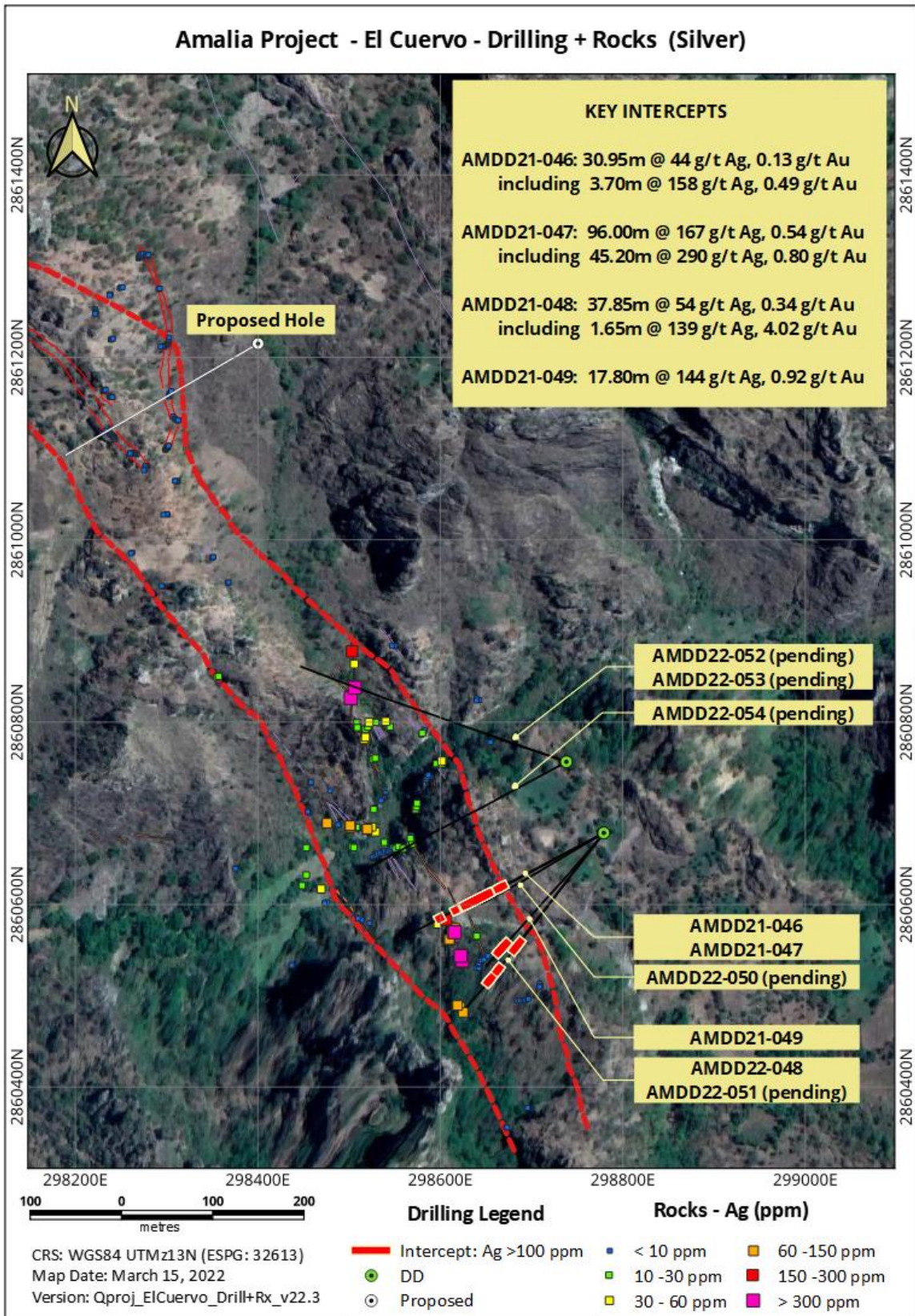


Table 1. El Cuervo target - drill results

DRILLHOLE	FROM (m)	TO (m)	INTERVAL (m)	EST. TRUE WIDTH	Ag (g/t)	Au (g/t)
AMDD21-046	214.35	214.80	0.45	0.4	214	0.52
And	225.55	228.35	2.80	2.7	122	0.13
And	239.25	270.20	30.95	29.9	44	0.13
Including	239.25	242.95	3.70	3.6	158	0.49
Including	239.25	240.95	1.70	1.6	233	0.31
And	292.00	295.50	3.50	3.4	203	0.53
Including	294.40	295.50	1.10	1.1	381	1.31
AMDD21-047	245.10	341.10	96.00	83.1	167	0.54
Including	279.90	341.10	61.20	53.0	232	0.65
Including	279.90	325.10	45.20	39.1	290	0.80
Including	290.40	297.75	7.35	6.4	592	0.69
Including	300.00	317.35	17.35	15.0	302	1.13
Including	309.50	317.35	7.85	6.8	438	1.12
AMDD21-048	214.85	216.45	1.60	1.5	116	1.39
And	222.15	223.50	1.35	1.3	302	0.56
And	227.00	233.30	6.30	6.1	77	0.61
Including	229.60	231.80	2.20	2.1	125	0.68
And	265.60	303.45	37.85	36.6	54	0.34
Including	286.90	297.40	10.50	10.1	84	0.75
Including	294.75	296.40	1.65	1.6	139	4.02
AMDD22-049	304.90	306.35	1.45	1.2	62	0.81
And	340.85	351.65	10.80	9.3	63	0.80
And	358.40	376.20	17.80	15.3	144	0.92
Including	365.55	376.20	10.65	9.1	190	1.01
Including	365.55	366.55	1.00	0.9	469	0.97
Including	375.00	376.20	1.20	1.0	483	3.94

### The Agreement

Pursuant to an option agreement signed in June 2018, Pan American Silver Corp. has the option to earn an initial 65% interest in the Amalia Project by making cash payments to Radius totalling US\$1.5 million (of which US\$800,000 has been received) and expending US\$2 million on exploration over four years. Pan American may earn an additional 10% by completing a preliminary-feasibility study.

### Quality Assurance and Quality Control

Drilling is carried out using NQ and HQ size tooling. Drill core is cut in half using a rock saw with one-half of the core then taken as a sample for analysis. Sample intervals are generally 1m intervals, producing samples of between 2 to 9 kg. Half-core samples are delivered to the ALS Geochemistry laboratory facilities in Chihuahua, Mexico. The samples are fire assayed for Au and are analysed for Ag and multi-elements using method code ME-ICP61 following a four-acid digestion. Overlimits are analysed using an appropriate method. Multi-element geochemical standards and blanks are routinely entered into the drill

core sample stream to monitor laboratory performance. Quality control samples submitted to ALS were returned within acceptable limits.

### **Technical Information**

Bruce Smith, M.Sc. (Geology), a member of the Australian Institute of Geoscientists, is Radius's Qualified Person as defined by National Instrument 43-101 - Standards of Disclosure for Mineral Projects. Mr. Smith has reviewed and approved the technical information contained in this news release.

### **Radius Gold Inc.**

Radius has a portfolio of projects located in Mexico, United States and Guatemala which it continues to advance, utilizing partnerships where appropriate in order to retain the Company's strong treasury. Management is constantly seeking out additional investment and project acquisition opportunities across the globe.

### **ON BEHALF OF THE BOARD**

Bruce Smith  
President and CEO

Symbol: TSXV-RDU

Contact: Bruce Smith  
200 Burrard Street, Suite 650  
Vancouver, BC V6C 3L6

Tel: 604-801-5432; Toll free 1-888-627-9378; Fax: 604-662-8829  
Email: info@goldgroup.com  
Website: www.radiusgold.com

*Neither the TSX Venture Exchange nor the Investment Industry Regulatory Organization of Canada accepts responsibility for the adequacy or accuracy of this release.*

### **Forward-looking statements**

*Certain statements contained in this news release constitute forward-looking statements within the meaning of Canadian securities legislation. All statements included herein, other than statements of historical fact, are forward-looking statements and include, without limitation, statements about the results of exploration work and future plans at the Amalia Project. Often, but not always, these forward looking statements can be identified by the use of words such as "estimate", "estimates", "estimated", "potential", "open", "future", "assumed", "projected", "used", "detailed", "has been", "gain", "upgraded", "offset", "limited", "contained", "reflecting", "containing", "remaining", "to be", "periodically", or statements that events, "could" or "should" occur or be achieved and similar expressions, including negative variations.*

*Forward-looking statements involve known and unknown risks, uncertainties and other factors which may cause the actual results, performance or achievements of the Company to be materially different from any results, performance or achievements expressed or implied by forward-looking statements. Such uncertainties and factors include, among others, whether the planned exploration work at Amalia will proceed as intended; changes in general economic conditions and financial markets; the Company or any joint venture partner not having the financial ability to meet its exploration and development goals; risks associated with the results of exploration and*

*development activities, estimation of mineral resources and the geology, grade and continuity of mineral deposits; unanticipated costs and expenses; and such other risks detailed from time to time in the Company's quarterly and annual filings with securities regulators and available under the Company's profile on SEDAR at [www.sedar.com](http://www.sedar.com). Although the Company has attempted to identify important factors that could cause actual actions, events or results to differ materially from those described in forward-looking statements, there may be other factors that cause actions, events or results to differ from those anticipated, estimated or intended.*

*Forward-looking statements contained herein are based on the assumptions, beliefs, expectations and opinions of management, including but not limited to: that the exploration work at the Amalia Project will advance as planned; that the Company's stated goals and the planned exploration and development activities at its properties will be achieved; that there will be no material adverse change affecting the Company or its properties; and such other assumptions as set out herein. Forward-looking statements are made as of the date hereof and the Company disclaims any obligation to update any forward-looking statements, whether as a result of new information, future events or results or otherwise, except as required by law. There can be no assurance that forward-looking statements will prove to be accurate, as actual results and future events could differ materially from those anticipated in such statements. Accordingly, investors should not place undue reliance on forward-looking statements.*